



**More Info**



Data sheet

---

## thermoport® K 21 unheated unload.-grey

**The neutral single-portion food transport box.**

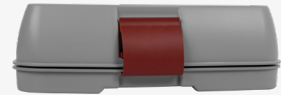
The stackable topper is used for the safe transport of individually portioned meals and for keeping them hot, for the best food quality and absolute transport safety.

Individual configuration options either with compartmentalised food plates made of chinaware for multi-component menus or undivided for single-component dishes (stews/bakes) with the respective food plate lids. Heating or cooling pellets can be inserted accordingly for the passively keeping food hot and cold on the food plates. Can be additionally equipped with a soup bowl and two cold food trays with the respective lids for additional side dishes (soups/salad).

For simplified handling in large containers, the RW-ST-TT-2021 stacking trolley transports all thermoport® 20 and 21 models safely and in an orderly manner.

## TECHNICAL SPECIFICATIONS

thermoport® K 21 unheated unload.-grey



## TECHNICAL SPECIFICATIONS

Dimensions	460 x 370 x 115 mm
Material	polypropylene
Weight	2,1 kg
Ambient temperature	-20°C to +100°C
Dishwasher safe	until 90 °C
<b>Order number</b>	<b>85 02 07 10</b>

## BENEFITS

Lightweight, robust and pore-free plastic in plain grey, double-walled and tightly welded.

Well insulated, low loss of heat/cold.

Ergonomic, hinged handles and high-quality snap locks.

Dishwasher-safe up to +90°C.