



**More Info**

Data sheet

---

## varithek<sup>®</sup> EST 3x1/1

**The built-in system module.**

The sturdy support frame for all GN 1/1 varithek<sup>®</sup> modules can be permanently welded in serving stations, such as the varithekbuffet, or safely inserted in a worktop cutout. Depending on the required size, available as a single EST module or with up to 5 EST modules integrated together. With optimally balanced spacing between the rails in the GN system used.

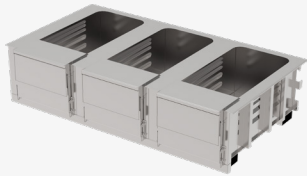
Through the insertion of GN 1/1 varithek<sup>®</sup> modules onto the designated support rails, the serving station can be functionally extended – depending on the module – from keeping food hot, cooking and steaming to grilling and frying. For preparations with direct contact heat, in combination with the thermoplates<sup>®</sup> GN cooking pot made of unique SWISS-PLY multi-layer material for the best food quality. The material combines aluminium in the core with conductivity (hot/cold) 10 times better than pure stainless steel, for significant energy savings in use, with the hygienic advantages of stainless steel. The watertight press-in lid and stylish cooking lid offer the matching lid variants for keeping food hot and for hygiene protection when serving.

Can be extended with a matching support frame and flexibly inserted in other GN container sizes.

All GN 1/1 varithek<sup>®</sup> modules are standardised and can therefore be flexibly combined and interchanged, for precise insertion in the AST/EST system modules or in the varithek<sup>®</sup> GN port.

## TECHNICAL SPECIFICATIONS

varithek® EST 3x1/1



## TECHNICAL SPECIFICATIONS

|                      |                        |
|----------------------|------------------------|
| Dimensions           | 1315 x 736 x 302 mm    |
| Material             | stainless steel 1.4301 |
| Weight               | 45 kg                  |
| Connected load       | 10.500 W               |
| Rated voltage        | 1N AC 230 V 50/60 Hz   |
| Plug type            | silicon cable          |
| Cable length         | 2000 mm                |
| system modules count | 3                      |
| <b>Order number</b>  | <b>91 05 02 03</b>     |

## BENEFITS

Stainless steel, rustproof, hygienic, high-quality brushed matt finish.

Sturdy, continuous worktop with an all-round, feather-edged edge support.

Interior sides with seamlessly deep-drawn support rails.

Ready to connect with one integrated, recessed power cable per EST module.

Robust, double-walled and self-locking, 2-part, hinged front flap, protects the operating controls, accessible from above at the same time.

Compatible with GN sizes, a space gain of approx. 30% compared to round containers.

Smooth, easy clean surface.