



More Info

Data sheet



acs 1000 ec - gantry - 2x varithek®

The mobile front cooking station with innovative extraction technology.

The mobile station with integrated “air cleaning system” push & pull extraction technology, made entirely of high-quality stainless steel, offers unlimited flexibility and mobility when cooking and makes front cooking an experience – without any unwanted odours. The gantry offers perfect hygienic protection and a practical work surface & transfer area on the stainless steel shelf with an integrated LED light strip and is easily accessible from the top for assembly or electrical work. A variety of varithek® cooking modules can be flexibly inserted centrally in the recessed installation niche.

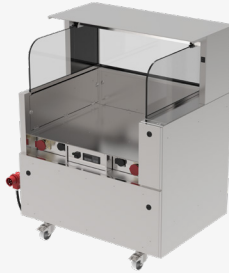
With a digital control and a reliable, multi-layer filter system in the substructure consisting of a grease, activated carbon and pollutant filter that neutralises all odours.

Thanks to the perfectly lateral air flow (ec) from left to right, a flame-retardant high-performance cyclone filter is used to remove the vapours formed during cooking from the grease and water-laden air right where they originate. An activated carbon filter binds the odours that occur. Filter stages can be optionally enhanced using filter accessories, with a plasma generator, electrostatic filter unit and HEPA filter.

The digital control offers a variety of useful functions, such as a display indicating the degree of wear of the filter elements (activated carbon filter), 4-level extraction power as well as a display of faults by means of continuous text. Different coloured LED lights indicate the operating status, an operating hours counter is also integrated and there is a safe alarm function with a buzzer.

TECHNICAL SPECIFICATIONS

acs 1000 ec - gantry - 2x varithek®



TECHNICAL SPECIFICATIONS

Dimensions	1000 x 760 x 1300 mm
Material	stainless steel 1.4301 (CNS)
Weight	125 kg
Connected load	11.000 W
Rated voltage	3N AC 400 V 50/60 Hz
Plug type	CEE-Plug 400V/16A
Cable length	2000 mm
Protection class	IPX4
Ambient temperature	+5°C to +40°C
Lighting gantry	with gantry 2 fixed-; 2 swivel castors
Castor	with brakes
Wheel diameter	80 mm
Order number	91 14 04 75

BENEFITS

3-sided stainless steel panelling, rustproof, hygienic, brushed matt finish and securely welded.

Optimal hygiene with the 3-sided germ guard gantry, fixed laminated safety glass and more efficient extraction through side splash guard panels. Stainless steel shelf on top with an LED light strip.

Elimination of odours & bacteria/microorganisms.

Safe to move with 4 swivel castors & locking brakes, DIN 18867, Part 8.

2 moisture-proof sockets with a hinged cover for cooking modules on the left & right.

Side walls, splash guard, filter, fan and collection components, inspection flap and seal can be removed without tools.

High-performance grease separator & collection trays are dishwasher-safe.