



**More Info**



Data sheet

---

## Buffet lid 2/3 stainless steel low.func.

**The buffet lid with practical soft-closing function for optimal handling.**

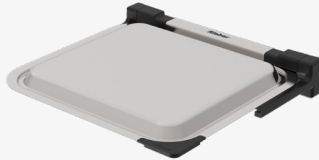
The stainless steel buffet lid - designed for storage, regeneration and hot & cold serving. With non-slip plastic corner at the right front, for easy handling and with a firmly connected hinge with integrated self-holding in open position. The additional automatic soft-closing function - ideal for perfect handling at the buffet.

Efficient usage in combination with cooking containers thermoplates® C on the K|POT®, available in GN sizes 1/1, 1/2 and 2/3, starting at a depth of 65mm.

The buffet lids are locked in place by folding hinges on the long side of each thermoplate®, so no additional space is required for storage when open. Easy opening and closing is ensured by the automatic and slow soft-closing function. With rounded corners for a perfect look in combination with the rounded thermoplates® C as well as the K|POT®.

## TECHNICAL SPECIFICATIONS

Buffet lid 2/3 stainless steel low.func.



## TECHNICAL SPECIFICATIONS

Dimensions 356 x 335 x 49 mm

Material stainless steel 1.4301 (CNS)

Weight 1,03 kg

Dishwasher safe Yes

Material thickness 0,8 mm

GN-Norm GN 2/3

**Order number 84 01 21 13**

## BENEFITS

Automatic soft-closing function for optimal handling of the buffet lid.

Lid remains in open position thanks to a firmly connected folding hinge.

With plastic corner for ideal grabbing and easy opening.

Optimally suited for storage, regeneration and hot & cold serving.

Convenient usage due to an integrated plastic corner for easy grabbing as well as an automatic soft-closing function.

Dishwasher-proof.