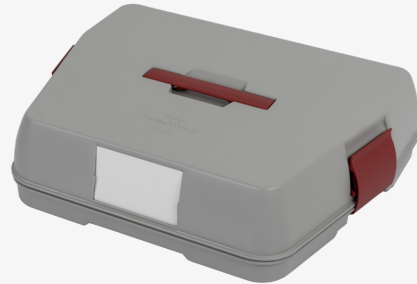




More Info



Data sheet

thermoport® K 21 unheated V.1.2 - grey

The neutral single-portion food transport box.

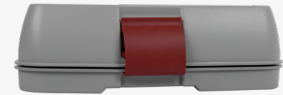
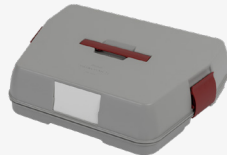
The stackable toplayer is used for the safe transport of individually portioned meals and for keeping them hot, for the best food quality and absolute transport safety.

Individual configuration options, with a 2-compartment round food plate for multi-component menus with the respective lid. Heating or cooling pellets can be inserted accordingly for passively keeping food hot and cold on the food plates, thus keeping the filled plates at the perfect temperature during transport. Can be additionally equipped with two cold food trays and one round soup bowl for side dishes (soups/ salad).

For simplified handling in large containers, the RW-ST-TT-2021 stacking trolley transports all thermoport® 20 and 21 models safely and in an orderly manner.

TECHNICAL SPECIFICATIONS

thermoport® K 21 unheated V.1.2 - grey



TECHNICAL SPECIFICATIONS

Dimensions	454 x 364 x 111 mm
Material	polypropylene
Weight	3,9 kg
Order number	85 02 07 12

BENEFITS

Lightweight, robust and pore-free plastic in plain grey, double-walled and tightly welded.

Well insulated, low loss of heat/cold.

Ergonomic, hinged handles and high-quality snap locks.

Dishwasher-safe up to +90°C.